



25%

of higher education
faculty have a moderate
or serious problem
making a living wage.

68%

of higher education
faculty spend their
own money to meet the
needs of their students.

INCOME

HIGHER EDUCATION FACULTY

21%

of higher education
faculty have a moderate
or serious problem
paying credit card
balances.

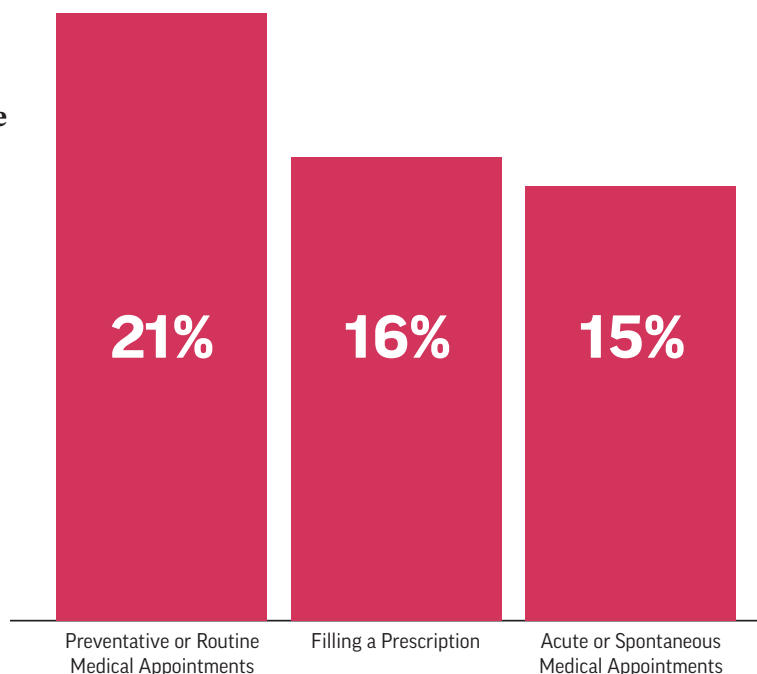


Higher education faculty and their families are skipping medical care due to financial strain.

Percent reporting that they or someone in their household has skipped each type of medical care due to other financial priorities.

HEALTH

HIGHER EDUCATION FACULTY



2%

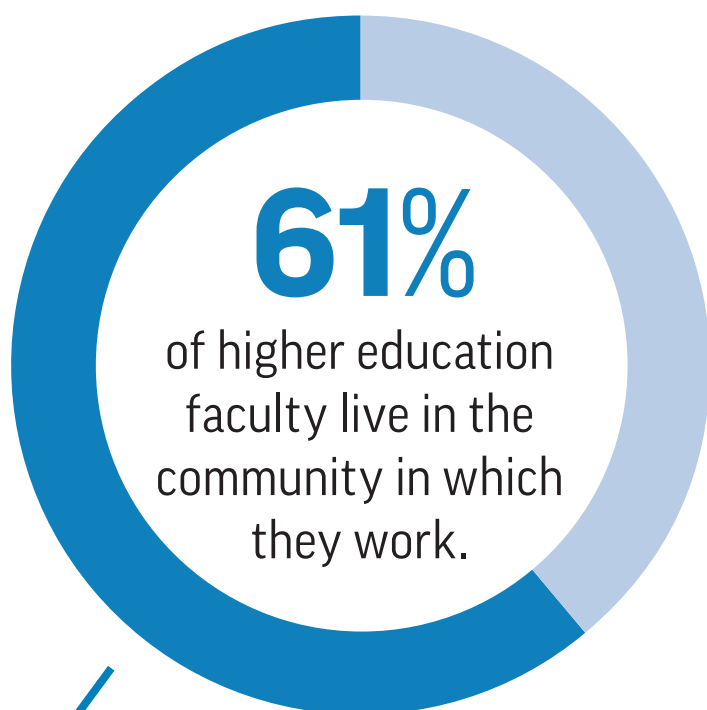
of higher education faculty participate in Medicaid.

18%

of higher education faculty have a moderate or serious problem paying for medical expenses.

11%

of higher education faculty have a moderate or serious problem paying health insurance premiums.



Among those who live in the community in which they work, **23%** find doing so to be a financial strain, while another **2%** rely on employer housing benefits or employer-sponsored housing to make this affordable.

Among higher education faculty who do not live in the community in which they work, **22%** say they cannot afford to do so, and **25%** say it would be a financial strain.

16%

of higher education faculty have a moderate or serious problem making rent or mortgage payments.

13%

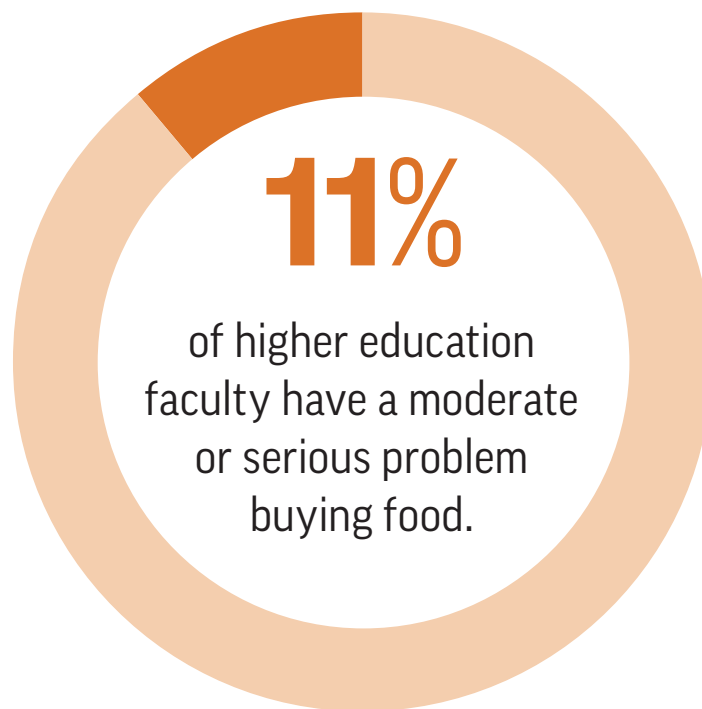
of higher education faculty have a moderate or serious problem paying gas, electric, or phone bills.

HOUSING

HIGHER EDUCATION FACULTY

FOOD

HIGHER EDUCATION FACULTY



5% of higher education faculty participate in free grocery or free meal programs.

2% of higher education faculty participate in SNAP, also known as food stamps.

About the survey: SSRS conducted this survey on behalf of NEA May 14 to July 7, 2024. The sample was drawn from a combination of NEA member lists, the SSRS Probability-Based Business Insights Panel, and a nonprobability/opt-in panel. Data were weighted to reflect the national educator population; for higher education faculty, weighted n=526.